

## Employee Production by Craft and Month

(Fiscal Year 2007)

\* Formula = (Emp Logged Hrs)/(Emp Avail Hrs - Emp Except Hrs)

<u>% Productivity</u>	September	October	November	December	January	February	March	April	May	June	July	August	Annual
Auto	104.2	64.5	63.9	45.8	62.2	37.3	47.3	46.1	35.5	97.2	77.6	39.6	57.7
Carpenter	75.4	79.5	83.5	70.7	71.4	71.5	76.3	70.1	75.9	76.4	88.6	84.1	76.9
Electric	82.7	84.4	79.7	82.6	80.5	83.9	86.6	77.8	80.8	89.0	86.4	81.1	82.9
Food Service	no data	2.8	82.9	76.1	103.2	100.6	89.7	88.5	88.6	88.6	85.6	82.6	83.7
HVAC	89.3	98.4	94.6	88.6	89.0	93.4	94.0	96.9	96.0	97.2	100.9	100.8	95.0
Locks	87.2	92.6	73.3	83.7	79.4	63.6	71.2	79.1	77.9	80.8	89.3	75.1	79.3
Paint	83.7	81.1	83.9	68.2	66.7	75.3	77.7	79.9	65.1	86.1	77.5	90.5	78.3
Parking	88.5	50.6	61.2	88.4	81.9	88.2	80.9	66.7	125.9	93.2	76.9	76.5	80.9
Plumbing	73.9	77.5	73.3	83.1	83.2	79.1	84.3	83.4	80.2	93.4	88.8	84.1	81.7
Welding	61.2	66.3	61.8	60.3	93.5	47.7	68.2	55.0	66.7	65.8	61.6	72.9	65.2

Department	83.1	83.9	82.8	79.6	81.1	79.9	83.1	80.9	82.8	88.8	89.9	85.8	83.5
------------	------	------	------	------	------	------	------	------	------	------	------	------	------

<u>Emp Logged Hrs</u>	September	October	November	December	January	February	March	April	May	June	July	August	Annual
Auto	272.9	179.3	122.7	105.3	164.71	106.7	128.9	142.8	84.4	142.3	115.6	104.6	1670.2
Carpenter	841.5	1049.7	949.5	667.5	815.5	830.8	929.4	822.5	943.5	878.0	929.5	903.5	10560.9
Electric	1035.4	1110.6	908.1	786.3	944.4	955.3	1038.9	996.6	1098.5	1079.0	1009.8	1105.6	12068.3
Food Service	no data	2.5	119.4	42.6	137.3	125.7	126.0	111.5	148.8	111.6	113.0	119.0	1157.4
HVAC	1720.0	2000.5	1689.7	1398.9	1636.9	1754.3	1694.4	1919.5	2016.4	1710.7	1698.1	1849.6	21088.8
Locks	258.0	311.1	194.9	207.6	220.0	190.9	216.4	240.4	257.7	203.6	232.3	261.5	2794.2
Paint	207.5	274.5	235.0	162.0	167.0	223.0	214.5	224.5	213.5	281.0	241.0	300.5	2744.0
Parking	113.3	85.1	83.3	99.0	118.0	120.0	110.1	104.0	178.7	141.7	91.5	120.8	1365.3
Plumbing	567.5	663.8	522.3	478.5	625.8	619.5	615.3	651.3	607.3	552.3	602.0	588.0	7093.3
Welding	85.0	108.8	86.6	67.5	132.3	67.5	95.5	87.5	108.8	75.3	90.0	122.5	1127.1

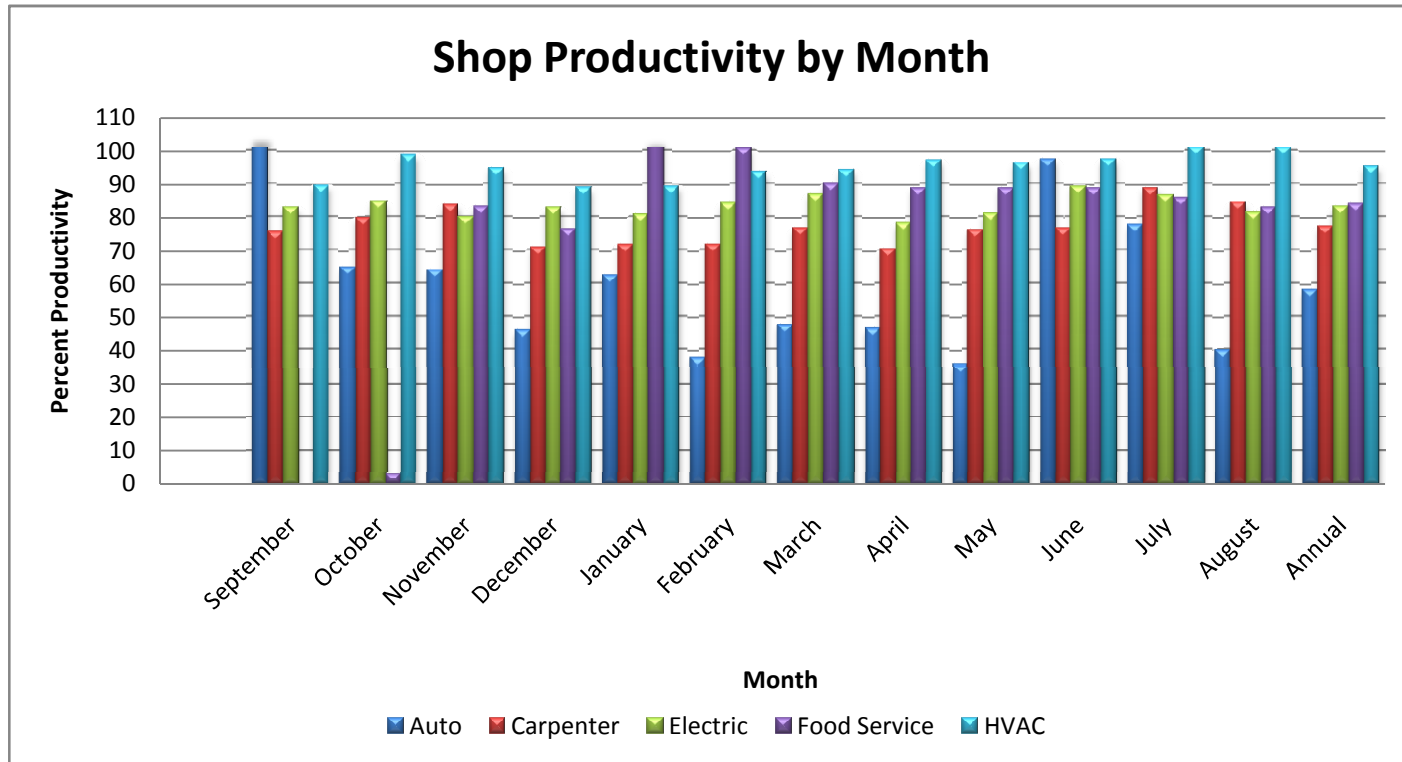
Department	5101.1	5785.7	4911.2	4015.2	4961.7	4993.5	5169.3	5300.5	5657.5	5175.4	5122.8	5475.6	61669.4
------------	--------	--------	--------	--------	--------	--------	--------	--------	--------	--------	--------	--------	---------

## Employee Production by Craft and Month (Fiscal Year 2007)

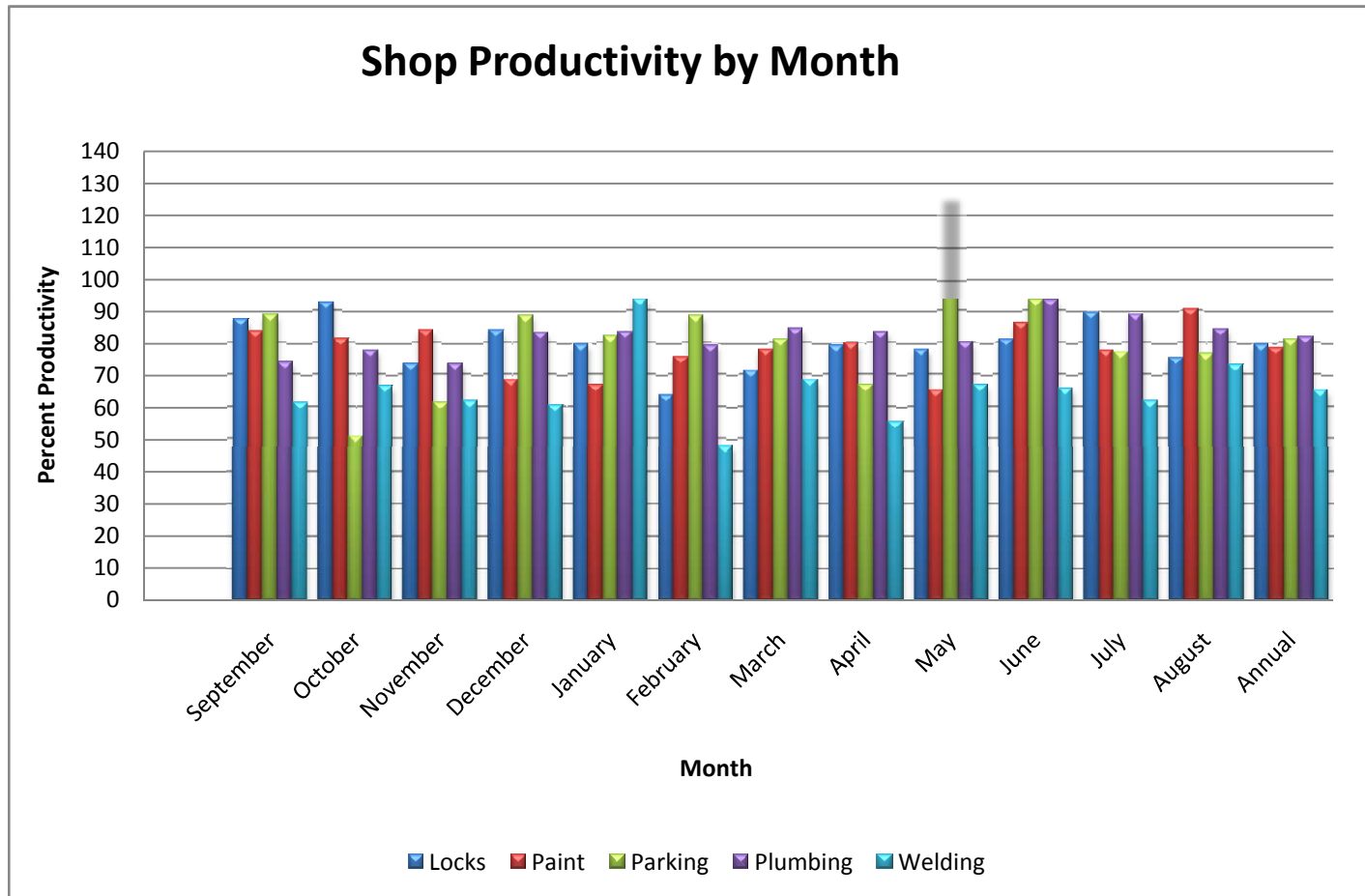
<u>Emp Avail Hrs</u>	September	October	November	December	January	February	March	April	May	June	July	August	Annual
Hrs/Mo/Emp	160	176	160	128	168	160	160	168	176	168	168	184	
Auto	320	352	320	256	336	320	320	336	280	168	168	280	3456
Carpenter	1280	1408	1280	1024	1344	1280	1280	1344	1408	1344	1176	1288	15456
Electric	1280	1408	1280	1024	1344	1280	1280	1344	1408	1344	1344	1472	15808
Food Service	0	96	160	128	168	160	160	168	176	168	168	184	1736
HVAC	2080	2288	2080	1664	2184	2080	2080	2184	2288	2048	2016	2208	25200
Locks	320	352	320	256	336	320	320	336	352	336	336	368	3952
Paint	320	352	320	256	336	320	320	336	352	336	336	368	3952
Parking	160	176	160	128	168	160	160	168	176	168	168	184	1976
Plumbing	800	880	800	640	840	800	800	840	880	840	840	920	9880
Welding	160	176	160	128	168	160	160	168	176	168	168	184	1976
Department	6720	7488	6880	5504	7224	6880	6880	7224	7496	6920	6720	7456	83392

<u>Emp Except Hrs</u>	September	October	November	December	January	February	March	April	May	June	July	August	Annual
Auto	58.0	74.0	128.0	26.0	71.0	34.0	47.3	26.5	42.0	21.5	19.0	16.0	563.3
Carpenter	164.0	88.0	143.5	80.0	202.0	118.0	62.5	170	164.8	195.5	126.5	214.0	1728.8
Electric	28.0	92.0	141.0	72.0	171.5	142.0	81.0	63.5	48.0	132.0	175.0	108.5	1254.5
Food Service	no data	8.0	16.0	72.0	35.0	35.0	19.5	42.0	8.0	42.0	36.0	40.0	353.5
HVAC	154.0	255.0	293.0	85.0	344.0	201.0	277.5	203.0	187.5	288.0	333.0	373.5	2994.5
Locks	24.0	16.0	54.0	8.0	59.0	20.0	16	32.0	21.0	84.0	76.0	20.0	430.0
Paint	72.0	13.5	40.0	18.5	85.5	24.0	44	55	24.0	9.5	25.0	36.0	447.0
Parking	32.0	8.0	24.0	16.0	24.0	24.0	24.0	12.0	34.0	16.0	49.0	26.0	289.0
Plumbing	32.0	24.0	88.0	64.5	88.0	17.0	70.0	59.0	123.0	248.5	162.0	221.0	1197.0
Welding	21.0	12.0	20.0	16.0	26.5	18.5	20	9	13.0	53.5	22.0	16.0	247.5
Department	585.0	590.5	947.5	458.0	1106.5	633.5	661.8	672.0	665.3	1090.5	1023.5	1071.0	9505.1

# Employee Production by Craft and Month (Fiscal Year 2007)



# Employee Production by Craft and Month (Fiscal Year 2007)



# Employee Production by Craft and Month (Fiscal Year 2007)

