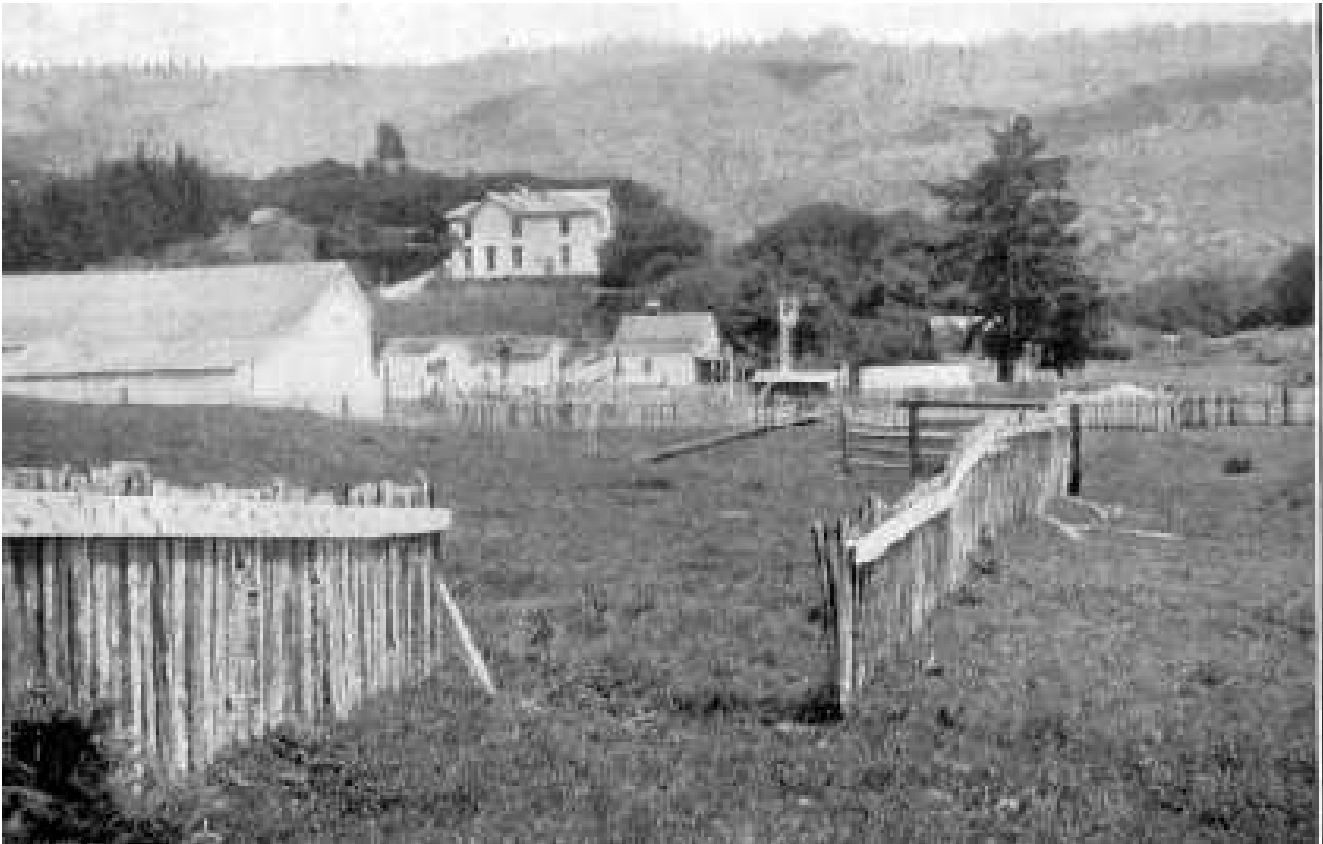


COURSE SYLLABUS

GEL 133 Sec. 01, 02, 03
PHYSICAL GEOLOGY 3 HOURS
FALL 2007

Professor: Dr. Charles Shaw
Telephone: 936-294-1560
email address: ces023@shsu.edu



Fence parted during the 1906 San Francisco Earthquake

Course Syllabus

You are responsible for knowing the information on this syllabus. Please read through it carefully.

GEL 133 Physical Geology (online)

3 Credit Hours

Spring 2007

Professor: Charles Shaw

Office: LDB 314

Telephone: (936) 294-1560

email: ces023@shsu.edu

Office Hours: 11:00 – 1:00 MWF

I have an open door policy, so you're welcome to drop by whenever you have a question, if you're near Huntsville. My office hours are when I'll definitely be in my office, so if you want to be sure to catch me at other times please call or email ahead of time. You are also welcome to ask questions via telephone or email.

Course Description

An introduction to the materials, processes, and structure of the earth. Topics include earthquakes, volcanoes, plate tectonics, mountain building, weathering and erosion, glaciation, oceans, and mineral resources.

I'll be making extensive use of the Blackboard, where I'll post reading assignments, notes, external links, tests, and so on for the entire course. That way you will be able to work at your own pace and move ahead when you have a block of time available. At the beginning of each week I'll upload any changes or additions to your reading. You will also be making use of a companion website (see below).

Homework assignments on Blackboard may be submitted at any time prior to final exam week (see Schedule).

Course Requirements

1. Textbook: *Essentials of Geology*, Lutgens, F. & Tarbuck, E., 9th edition, Prentice Hall, Inc. You may use the 8th edition, if you wish, but check to see that used books have the CD attached on the inside back cover.

It is essential do the assigned readings in order to fully understand the concepts presented. The textbook has a CD inside the back cover, and Prentice Hall has an excellent companion website at (www.prenhall.com/lutgens/).

Exams: 4 @ 100 pts each, lowest exam dropped: **300 points**

Homework: 16 @ 10 pts each, lowest 2 dropped: **140 points**

TOTAL: 440 points

Grading Scale:

90-100%	A
80-89%	B
70-79%	C
60-69%	D
0-59%	F

Grades for each test will be available online on Blackboard, accessible through the SHSU website. Your final grade will be rounded to the nearest whole percentage. Final grades will NOT be curved.

No grades will be given out by telephone or individual e-mail.

Exams will cover material from your reading assignments, Powerpoint lectures, and homework assignments.

- Exams will be multiple choice (50 questions, 2 points each).
- Tests will be given on the announced days only (see the schedule at the end of this syllabus).
- Tests will be timed (50 minutes).
- Grades are determined by earned point totals as shown above.
- The final exam is not comprehensive.

There will be no extra credit.

There are no makeup exams

Academic Conduct

SHSU expects all students to do their work in an honest manner. Cheating on an exam will be penalized, at the minimum, with an automatic F on that exam. If there is strong evidence for academic dishonesty, the University may initiate disciplinary or legal action.

University policy: *"All students are expected to engage in all academic pursuits in a manner that is above reproach. Students are expected to maintain complete honesty and integrity in academic experiences both in and out of the classroom. Any student found guilty of dishonesty in any phase of academic work will be subject to disciplinary action. The University and its official representatives may initiate disciplinary proceedings against a student accused of academic dishonesty including, but not limited to, cheating on examinations or other academic work which is to be submitted, plagiarism, collusion and abuse of resource materials."*

Disabled Student Policy

SHSU is committed to providing reasonable accommodations to ensure full learning opportunities for students with disabilities. If you have a disability which may affect your academic performance, please request assistance from the Counseling Center, located on campus in the Lee Drain Building Annex (phone 936-294-1720), in a timely manner. All disclosures will be kept in strict confidentiality

Americans with Disabilities Act:

University Policy: *"It is the policy of Sam Houston State University that no otherwise qualified disabled individual shall, solely by reason of his/her handicap, be excluded from the participation in, be denied the benefits of, or be subjected to discrimination under and academic or Student Life program or activity. Disabled students may request assistance with academically related problems stemming from individual disabilities by contacting the Director of the Counseling Center in the Lee Drain Annex or by calling (936) 294-1720. Any student seeking accommodations should go to the Counseling Center and Service for Students with Disabilities in a timely manner and complete a form that will grant permission to receive special accommodations."*

Lecture Outline Fall 2007

All chapters listed below refer to the 9th edition of the textbook, although similar material may be found in the 8th edition. The schedule below is subject to change.

Week 1 (August 20-24)

Earth Structure (Ch 1)

Week 2 (August 27-31)

Plate Tectonics (Ch 15,16)

Week 3 (September 3-7)

Minerals (Ch 2), an introduction to the rock cycle

No Class-Labor Day, September 3

Week 4 (September 10-14)

Igneous rocks and volcanoes (Ch 3 and 4)

*****EXAM 1 – Monday, September 17, 2007*****

Week 5 (September 18-19)

Sedimentary Rocks (Ch 6)

Week 6 (September 26-28)

Metamorphic Rocks (Ch 7)

Week 7 (October 1-5)

Rock Deformation and Mountain Building (Ch 17)

Week 8 (October 8-12)

Earthquakes (Ch 14)

*****EXAM 2 – Monday, October 15, 2007*****

Week 9 (October 15-19)

Geologic Time (Ch 18)

Week 10 (October 22-26)

Week 11 (October 29-November 2)

Weathering and Soils (Ch 5)

Week 12 (November 5-9)

Mass Movement (Ch 8)

*****EXAM 3 – Monday, November 12, 2007*****

Week 13 (November 12-16)

Ground water (Ch 10), Streams and Surface Water (Ch 9)

Week 14 (November 19-20)

Glaciers (Ch 11)

No Class-Thanksgiving Recess (November 21-25)

Week 15 (November 26-30)

Deserts and Wind (Ch 12)

Week 16 (December 3-6)

Shorelines (Ch 13) and the Ocean Floor (Ch 16)

*****EXAM 4 (FINAL) – Tuesday, , 2007*****