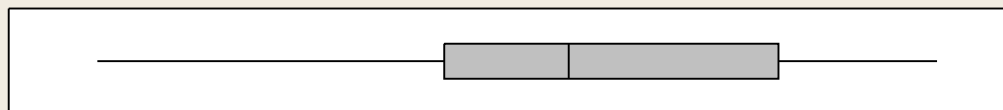
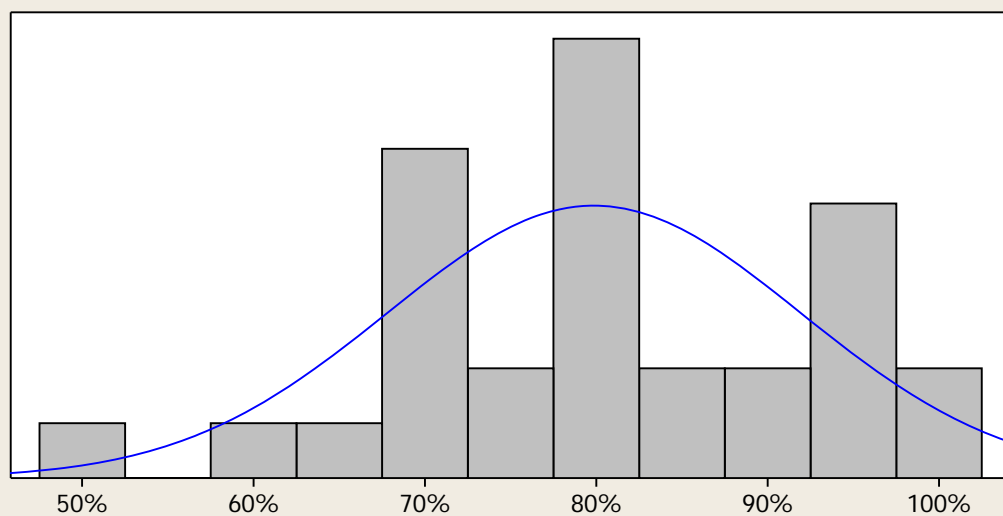


2012 OATdB REPORT FOR CHEM 4448

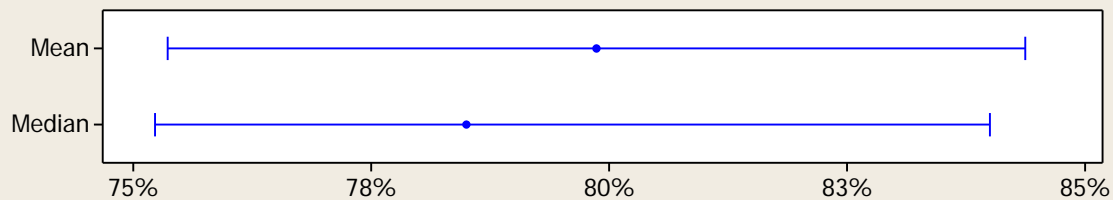
Count 30
 N > 60% 28
 % > 60% 93%

Last Name	First Name	Username	Letter	WtAve	E-Ave	Lab-Ave	FA-Ave	P-Ave	Abs	Exam1	Exam2	Exam3	Exam4	Exam5	Exam6
Aleman	Janice	jla035	A	86.5%	83%	87%	99%	100%	1	68%	96%	78%	91%	66%	100%
Ashcraft	Paul	pma006	B	81.7%	76%	86%	94%	100%	2	76%	68%	86%	88%	72%	68%
Baird	Shane	spb006	C	69.6%	66%	68%	84%	89%	5	72%	58%	74%	87%	38%	68%
Baker	Nathan	ncb006	C	70.3%	59%	82%	97%	100%	3	68%	28%	72%	91%	42%	51%
Belt	Stephanie	smb044	B	82.1%	79%	87%	82%	89%	5	64%	80%	80%	87%	87%	78%
Bouchum	Jorgan	jsb036	B	83.3%	77%	89%	97%	100%	3	76%	64%	78%	92%	70%	84%
Brue	Kayla	kcb013	C	73.3%	70%	71%	94%	87%	6	66%	56%	68%	85%	74%	69%
Carson	Mariah	mdc026	B	85.4%	82%	84%	100%	100%	0	88%	70%	88%	80%	83%	84%
De Jesus	Sully	sjd009	C	76.2%	69%	83%	100%	87%	6	56%	63%	79%	60%	65%	88%
Deyne	Todd	tad013	B	79.2%	72%	85%	97%	100%	0	72%	64%	78%	79%	58%	82%
Doughty	Charles	cmd033	C	71.5%	79%	47%	81%	84%	7	88%	92%	70%	88%	60%	78%
Fisher	Dawn	dmf008	B	79.6%	71%	87%	100%	100%	0	76%	56%	70%	78%	68%	79%
Goolsby	Gloria	gig002	C	77.0%	76%	66%	97%	100%	3	72%	68%	84%	82%	59%	93%
Guillen	Kristen	kmg032	B	78.9%	75%	77%	100%	100%	2	72%	64%	75%	86%	60%	90%
Katba	Amena	ask009	B	80.9%	78%	83%	83%	100%	2	84%	66%	88%	92%	43%	96%
Mc Kenzie	Jazmyne	jbm026	B	84.9%	80%	88%	99%	100%	0	88%	80%	72%	84%	64%	93%
Montalvo	Kristina	kdm043	C	71.4%	60%	82%	98%	100%	2	66%	59%	52%	72%	37%	75%
Morris	Quinton	qlm001	D	58.5%	56%	45%	91%	89%	5	44%	46%	56%	74%	50%	67%
Niermann	Crystal	cnn006	A	87.3%	86%	83%	99%	100%	0	84%	84%	78%	88%	84%	99%
Olvera	Joel	jxo012	C	73.6%	67%	74%	98%	100%	2	68%	76%	52%	84%	40%	82%
Pierce	Carlin	cap045	C	67.5%	74%	53%	54%	89%	5	80%	76%	60%	84%	64%	79%
Sabo	Bryan	bfs003	B	79.7%	83%	66%	83%	100%	2	88%	84%	90%	96%	62%	78%
Shifflet	Marla	mks015	B	80.2%	74%	84%	100%	100%	2	84%	72%	82%	76%	53%	76%
Spenn	Victoria	vas007	A	94.6%	96%	89%	100%	100%	0	95%	100%	96%	92%	95%	95%
Trayanova	Velichka	vht001	C	65.5%	54%	75%	97%	100%	2	76%	48%	32%	60%	36%	69%
Tucker	Amy	amt034	A	89.7%	88%	87%	100%	100%	2	88%	90%	90%	96%	70%	95%
Wall	Leslie	lcw011	C	72.6%	65%	78%	90%	100%	0	68%	68%	68%	70%	60%	58%
Wilhite	David	daw018	C	73.6%	67%	75%	97%	100%	2	76%	48%	72%	74%	60%	72%
Zserdin	Katherine	kmz004	C	66.8%	59%	69%	97%	89%	5	78%	52%	48%	56%	42%	78%
Zuccaro	Rebecca	rlz002	C	77.5%	69%	86%	95%	100%	0	72%	58%	84%	76%	54%	72%

Summary for 2012



95% Confidence Intervals



Anderson-Darling Normality Test

A-Squared	0.32
P-Value	0.515

Mean	0.79867
StDev	0.12062
Variance	0.01455
Skewness	-0.234850
Kurtosis	-0.186481
N	30

Minimum	0.51000
1st Quartile	0.71250
Median	0.78500
3rd Quartile	0.90750
Maximum	1.00000

95% Confidence Interval for Mean

Lower Bound	0.75363
Upper Bound	0.84371

95% Confidence Interval for Median

Lower Bound	0.75229
Upper Bound	0.84000

95% Confidence Interval for StDev

Lower Bound	0.09606
Upper Bound	0.16216

CHEM 4448 Performance from 2004 to 2012

