

**RESEARCH**

- Search the Catalog
- Databases and Indexes
- Find a Journal Title
- Government Documents
- Special Collections
- Citation Guides
- Other Library Catalogs
- Research Services

**SERVICES**

- InterLibrary Services
- Distance Education
- Faculty Services
- Request a Purchase
- Online Book Renewal
- Course Reserves
- Texshare
- Graduate Student Resources
- Library Instruction

**ABOUT THE LIBRARY**

- Library Hours
- Virtual Library Tour
- Faculty and Staff
- Library Home
- Library FAQ
- Sitemap
- SHSU Home

Questions/comments about this website?

# Virtual Tour of Newton Gresham Library

Click Next and Previous to view the tour in order, or click any small image to view the image and caption. Download [library floor map](#).



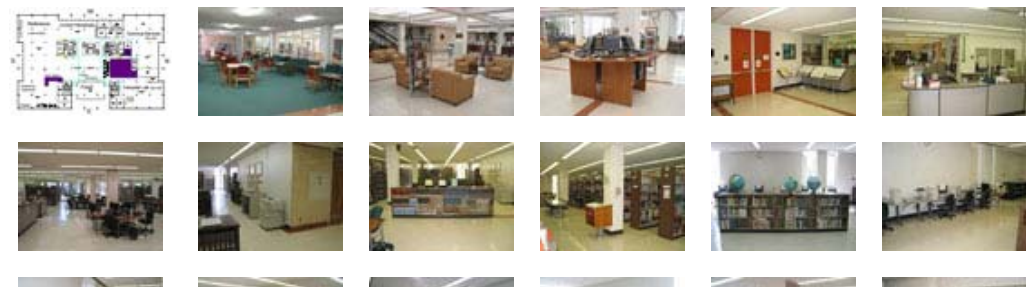
**EXTERIOR**

Signs outside identify the library building and the services inside.

## Building Exterior



## Second Floor / Main Lobby

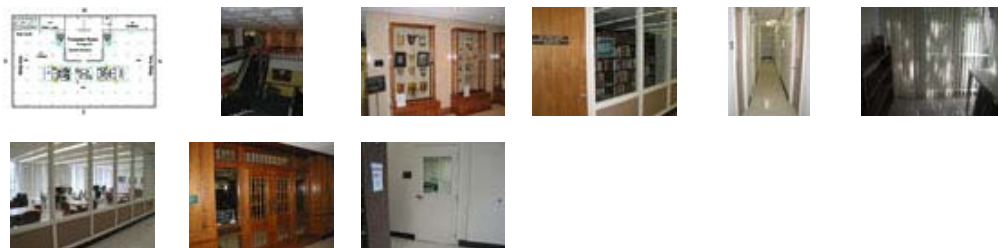




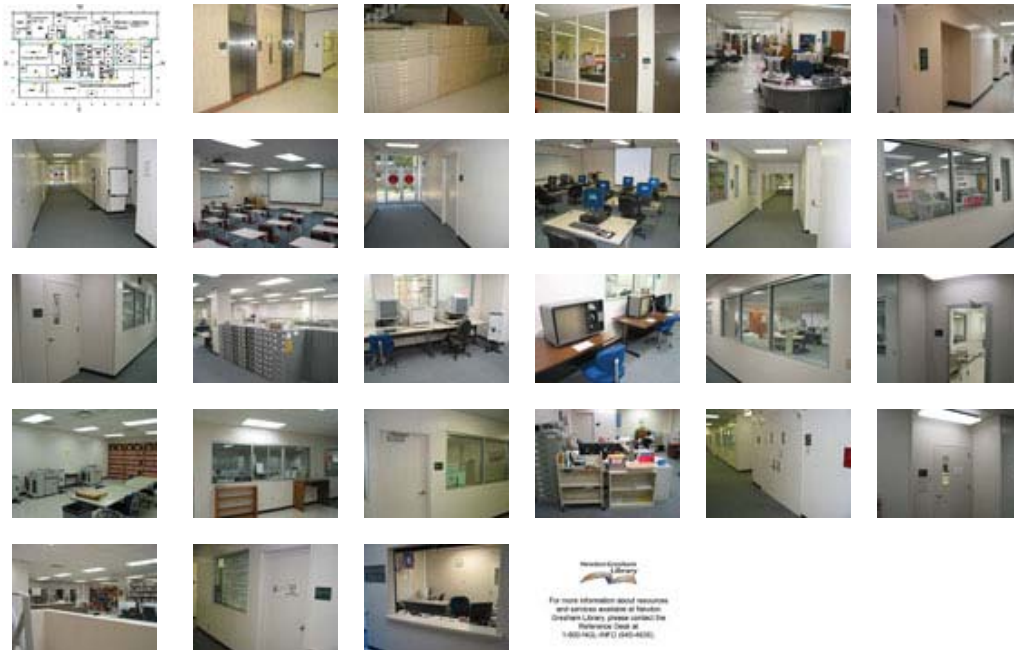
## Third Floor



## Fourth Floor



## First Floor



  
 For more information about resources  
 and services available at Sheldon-  
 Griffith Library, please contact the  
 Reference Group at  
 1-800-743-7872 (TDD) (245-4433)