

## Employee Production by Craft and Month (Fiscal Year 2008) thru June 2008

\* Formula = (Emp Logged Hrs)/(Emp Avail Hrs - Emp Except Hrs)

<u>% Productivity</u>	September	October	November	December	January	February	March	April	May	June	July	August	Annual
Auto	64.6	90.6	73.4	59.0	43.2	55.2	55.9	34.5	48.9	40.9	#####	#####	52.9
Carpenter	74.6	75.7	61.2	74.1	75.6	77.3	75.1	53.6	66.9	79.5	#####	#####	71.0
Electric	77.5	80.1	78.2	72.5	79.3	78.4	76.7	76.0	61.5	67.4	#####	#####	74.8
Food Service	53.7	88.3	81.1	24.5	88.7	90.1	94.7	47.7	82.7	88.3	#####	#####	75.4
HVAC	92.8	86.2	92.8	91.0	89.1	89.8	90.3	96.4	85.8	87.2	#####	#####	90.1
Locks	94.8	93.2	91.0	86.3	92.2	99.2	95.9	90.1	91.7	82.8	#####	#####	92.0
Paint	85.7	80.7	82.4	76.2	86.1	79.3	57.5	31.4	75.6	84.9	#####	#####	73.4
Parking	82.9	95.7	115.9	56.3	111.4	91.3	106.9	34.9	69.3	10.2	#####	#####	76.0
Plumbing	87.8	89.9	85.0	93.6	90.9	90.5	87.8	74.0	81.1	83.2	#####	#####	86.0
Welding	70.1	68.1	70.7	74.2	47.5	72.2	86.2	57.1	72.9	76.3	#####	#####	69.3
Department	83.1	83.7	81.3	79.7	82.4	83.5	82.0	70.9	74.0	76.8			79.6

## Employee Production by Craft and Month (Fiscal Year 2008) thru June 2008

**Emp Logged Hrs**    September    October    November    December    January    February    March    April    May    June    July    August    Annual

Auto	98.3	166.8	100.3	70.8	107.15	159.0	135.3	121.5	158.4	119.5			1236.8
Carpenter	706.5	872.0	687.48	658.1	967.5	942.0	821.5	724	813.0	962.3			8154.3
Electric	889.1	1029.2	907.4	649.5	993.8	948.9	870.9	1021.1	750.4	803.7			8864.0
Food Service	81.65	162.6	107.0	25.5	129.5	122.6	135.0	73.5	135.7	127.1			1100.0
HVAC	1600.8	1687.5	1516.8	1197.32	1603.2	1661.9	1375.7	1693.2	1389.2	1439.0			15164.6
Locks	254.1	303.8	236.7	200.3	282.0	322.0	275.15	306.5	308.3	223.5			2712.3
Paint	228	196.0	122.0	164.5	254.0	107.0	138.08	108	376.5	416.5			2110.6
Parking	99.5	143.0	162.3	54.0	137.6	133.3	124.0	51.0	116.5	16.3			1037.4
Plumbing	600.25	729.8	586.8	466.5	678.0	692.5	598.3	618.8	606.5	623.0			6200.3
Welding	94.0	109.0	107.5	89	66.5	109	109	89	102.0	122.0			997.0

Department                    4652.2    5399.6    4534.1    3575.4    5219.3    5198.1    4582.9    4806.6    4756.4    4852.7                    47577.2

**Emp Avail Hrs**    September    October    November    December    January    February    March    April    May    June    July    August    Annual

Hrs/Mo/Emp                    160            176            160            128            168            160            160            168            176            168            168            184

Auto	152	184	160	120	256	336	312	352	336	336			2544
Carpenter	1064	1288	1280	960	1344	1344	1248	1408	1344	1344			12624
Electric	1216	1472	1280	960	1344	1344	1248	1408	1344	1344			12960
Food Service	152	184	160	120	168	168	156	176	168	168			1620
HVAC	1896	2208	1920	1440	2016	2016	1768	1848	1848	1848			18808
Locks	304	368	320	240	336	336	312	352	336	336			3240
Paint	304	368	320	240	336	168	240	352	504	504			3336
Parking	152	184	160	120	168	168	156	176	168	168			1620
Plumbing	760	920	800	600	840	840	780	880	840	840			8100

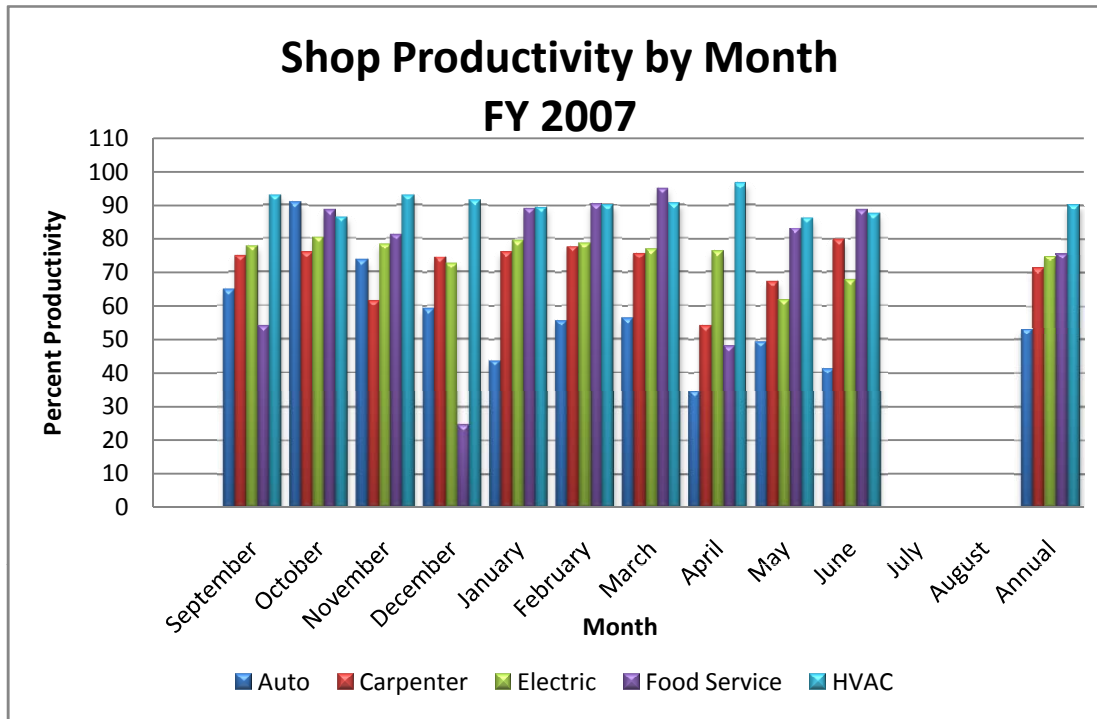
## Employee Production by Craft and Month (Fiscal Year 2008) thru June 2008

Welding	152	184	160	120	168	168	156	176	168	168			1620
Department	6152	7360	6560	4920	6976	6888	6376	7128	7056	7056			66472

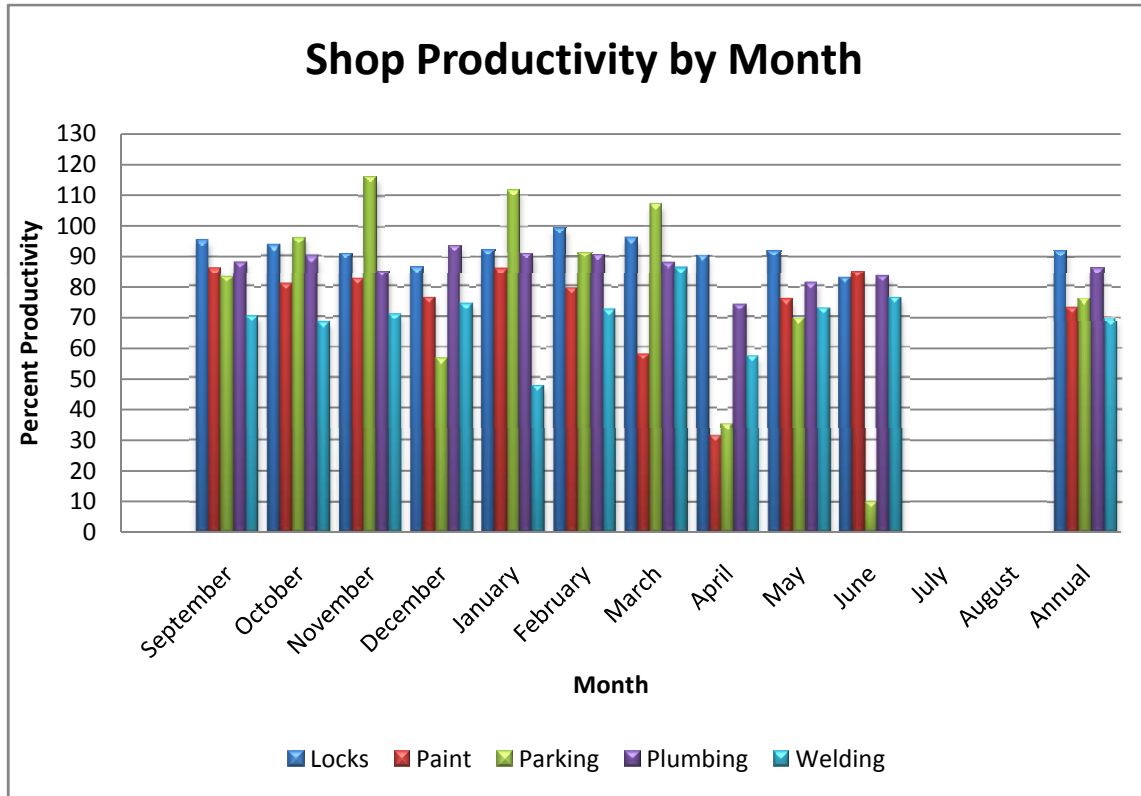
<u>Emp Except Hrs</u>	September	October	November	December	January	February	March	April	May	June	July	August	Annual
Auto	0.0	0.0	23.5	0.0	8.0	48.0	70.0	0.0	12.0	44.0			205.5
Carpenter	117.0	136.0	157.5	72.0	65.0	125.0	154.5	57	129.5	133.5			1147.0
Electric	68.5	187.0	120.0	64.0	90.5	134.0	112.0	64.0	124.0	152.0			1116.0
Food Service	0.0	0.0	28.0	16.0	22.0	32.0	13.5	22.0	4.0	24.0			161.5
HVAC	171.0	249.5	285.5	124.5	217.5	165.0	244.0	91.0	229.0	197.0			1974.0
Locks	36.0	42.0	60.0	8.0	30.0	11.5	25	12.0	0.0	66.0			290.5
Paint	38.0	125.0	172.0	24.0	41.0	33.0	0	8	6.0	13.5			460.5
Parking	32.0	34.5	20.0	24.0	44.5	22.0	40.0	30.0	0.0	8.0			255.0
Plumbing	76.5	108.0	109.5	101.8	94.0	74.5	99.0	44.0	92.0	91.5			890.8
Welding	18.0	24.0	8.0	0.0	28.0	17	29.5	20	28.0	8.0			180.5
Department	557.0	906.0	984.0	434.3	640.5	662.0	787.5	348.0	624.5	737.5			6681.3

# Employee Production by Craft and Month

(Fiscal Year 2008)  
thru June 2008



# Employee Production by Craft and Month (Fiscal Year 2008) thru June 2008



**Employee Production by Craft and Month**  
**(Fiscal Year 2008)**  
**thru June 2008**

---